

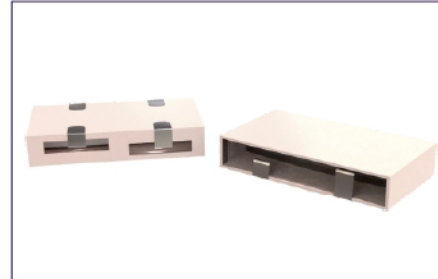


SMD 6.5x6.0 to 8.5x7.5 PACKAGE

PRODUCT FEATURES

- High selectivity, suitable for narrowband communication
- Compact structure and small size
- Electrical performance won't be affected by external electromagnetic interference
- Suitable for matching with different ICs
- Automatic on-line, can be reflowed
- RoHS compliant

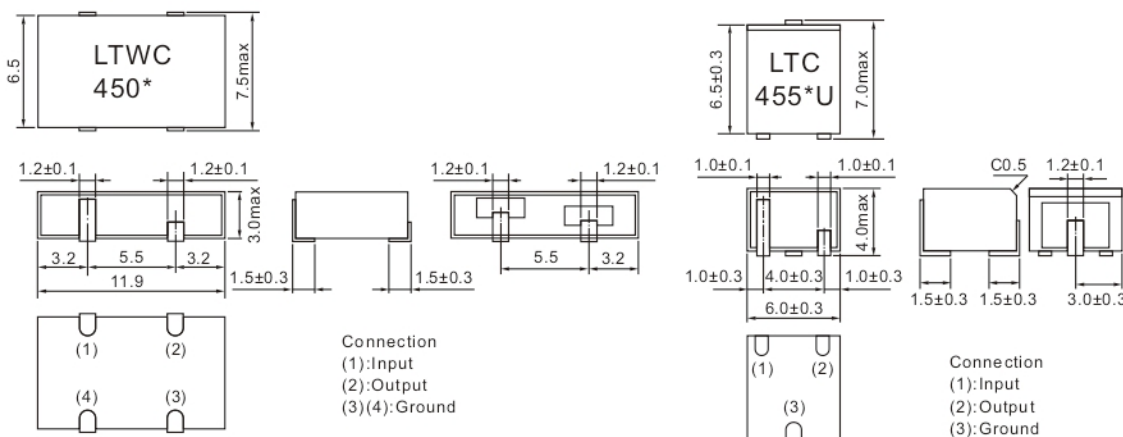
PRODUCT PHOTO



PRODUCT SPECIFICATIONS

| Part Number |          | 6dB Bandwidth (KHz)Min. | Attn.BW Bandwidth (KHz)Min. | Stop Band Attn (dB) Min. |     | Ripple (dB)Max. | Insertion Loss(dB)Max. | Input/Output Impedance (K.Ohm) | Operating Temperature (°C) |
|-------------|----------|-------------------------|-----------------------------|--------------------------|-----|-----------------|------------------------|--------------------------------|----------------------------|
|             |          |                         |                             | LTWC                     | LTC |                 |                        |                                |                            |
| LTWC450D    | LTC450DU | ±10                     | ±20                         | 45                       | 28  | 3               | 6                      | 1.5                            | -20~+80                    |
| LTWC450E    | LTC450EU | ±7.5                    | ±15                         | 45                       | 28  | 3               | 6                      | 1.5                            |                            |
| LTWC450F    | LTC450FU | ±6                      | ±12.5                       | 45                       | 28  | 3               | 6                      | 2                              |                            |
| LTWC450G    | LTC450GU | ±4.5                    | ±10                         | 45                       | 28  | 3               | 6                      | 2                              |                            |
| LTWC450H    | LTC450HU | ±3                      | ±9                          | 50                       | 30  | 3               | 6                      | 2                              |                            |
| LTWC455D    | LTC455DU | ±10                     | ±20                         | 45                       | 28  | 3               | 6                      | 1.5                            |                            |
| LTWC455E    | LTC455EU | ±7.5                    | ±15                         | 45                       | 28  | 3               | 6                      | 1.5                            |                            |
| LTWC455F    | LTC455FU | ±6                      | ±12.5                       | 45                       | 28  | 3               | 6                      | 2                              |                            |
| LTWC455G    | LTC455GU | ±4.5                    | ±10                         | 45                       | 28  | 3               | 6                      | 2                              |                            |
| LTWC455H    | LTC455HU | ±3                      | ±9                          | 50                       | 30  | 3               | 6                      | 2                              |                            |

PACKAGE OUTLINE / DIMENSIONS



LTWC Series

LTC \*\*\*\*U Series