

Features

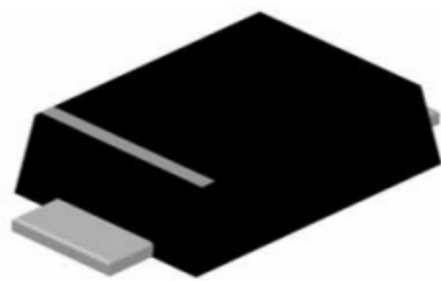
- Fast switching speed
- Surface mount package ideally suited for automatic insertion
- Low power loss, high efficiency
- Ultra thin profile package for space constrained utilization
- Lead free in compliance with EU RoHS 2.0
- Green molding compound as per IEC 61249 standard

Mechanical Data

- Case : SOD-123FL, Plastic
- Terminals : Solderable per MIL-STD-750, Method 2026
- Approx. Weight : 0.0006 ounces, 0.017 grams.
- Polarity : Color band denotes cathode end

Dimensions and Pin Configuration

SOD123FL



Marking: GR

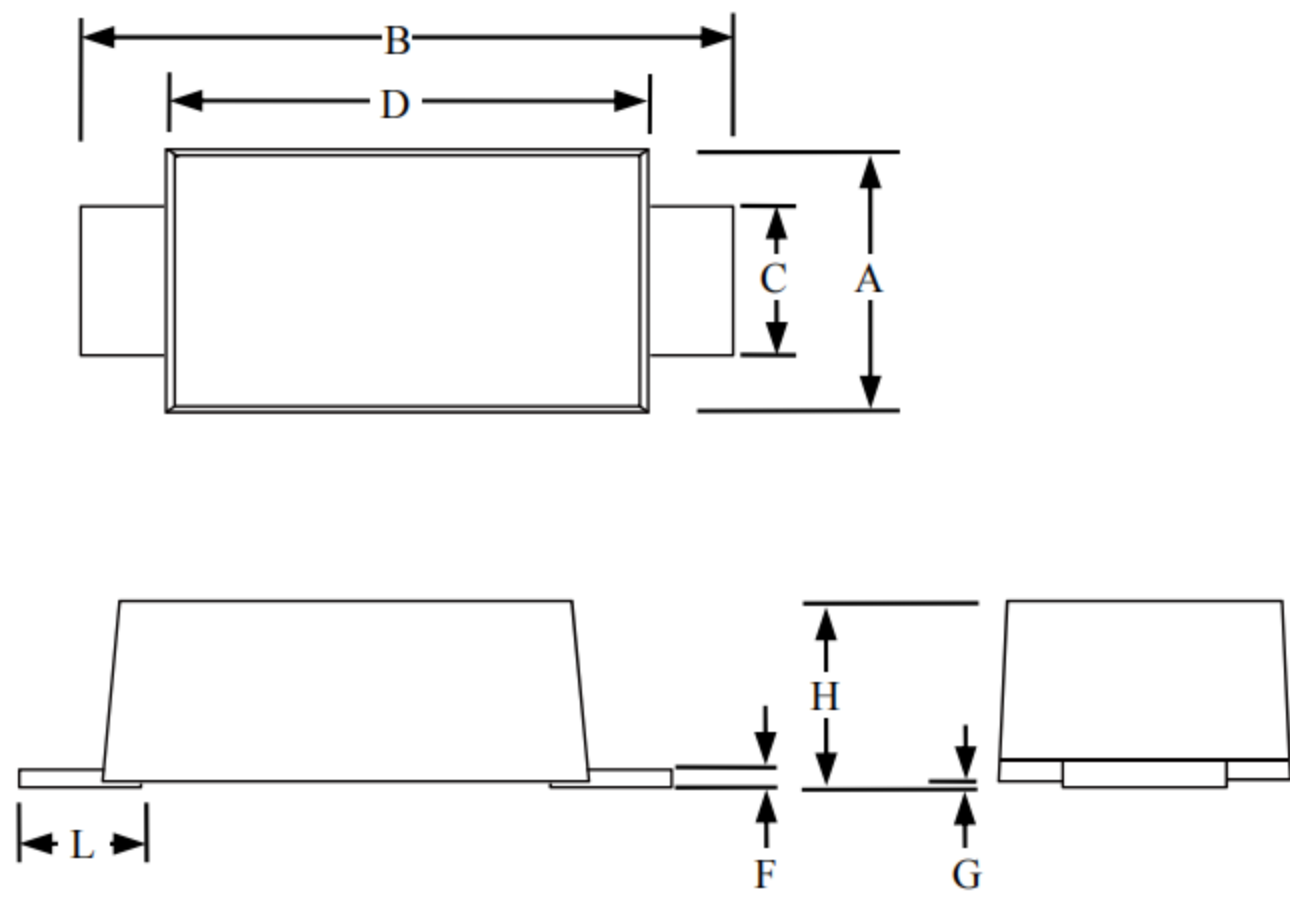
Maximum Ratings & Thermal Characteristics

| PARAMETER | SYMBOL | MBR2H100SFT3G-TP | UNITS |
|---|-------------|------------------|-------|
| Reverse Voltage | V_R | 100 | V |
| Peak Reversr Voltage | V_{RRM} | 100 | V |
| Average Rectified Current at $T_A=75^\circ\text{C}$ | $I_{F(AV)}$ | 2 | A |
| Non-repetitive Peak Forward Surge Current at $t=8.3\text{ms}$ | I_{FSM} | 50 | A |

Electrical Characteristics

| PARAMETER | SYMBOL | MBR2H100SFT3G-TP | UNITS |
|---|-----------------|------------------|--------------------|
| Minimum Reverse Breakdown Voltage at $I_R=500\mu\text{A}$ | V_R | 100 | V |
| Maximum Forward Voltage at $I_F=2\text{A}$ | V_F | 0.85 | V |
| Reverse Leakage Current at V_{RRM} | I_R | 40 | μA |
| Typical Thermal Resistance, Junction to Ambient | $R_{\theta JA}$ | 60 | $^\circ\text{C/W}$ |
| Operating Junction and Storage Temperature Range | T_J, T_{STG} | -50 to +150 | $^\circ\text{C}$ |

Package Outline Dimensions: SOD123FL



| SOD-123FL | | | | | | |
|-----------|--------|-----|-------|-------------|-----|------|
| Dimension | Inches | | | Millimeters | | |
| | MIN | NOM | MAX | MIN | NOM | MAX |
| A | 0.059 | | 0.079 | 1.5 | | 2 |
| B | 0.134 | | 0.154 | 3.4 | | 3.9 |
| C | 0.028 | | 0.047 | 0.7 | | 1.2 |
| D | 0.098 | | 0.114 | 2.5 | | 2.9 |
| F | 0.002 | | 0.01 | 0.05 | | 0.26 |
| G | - | | 0.004 | - | | 0.1 |
| H | 0.037 | | 0.053 | 0.95 | | 1.35 |
| L | 0.014 | | 0.035 | 0.35 | | 0.9 |